

SPG™ | UNIVERSAL®

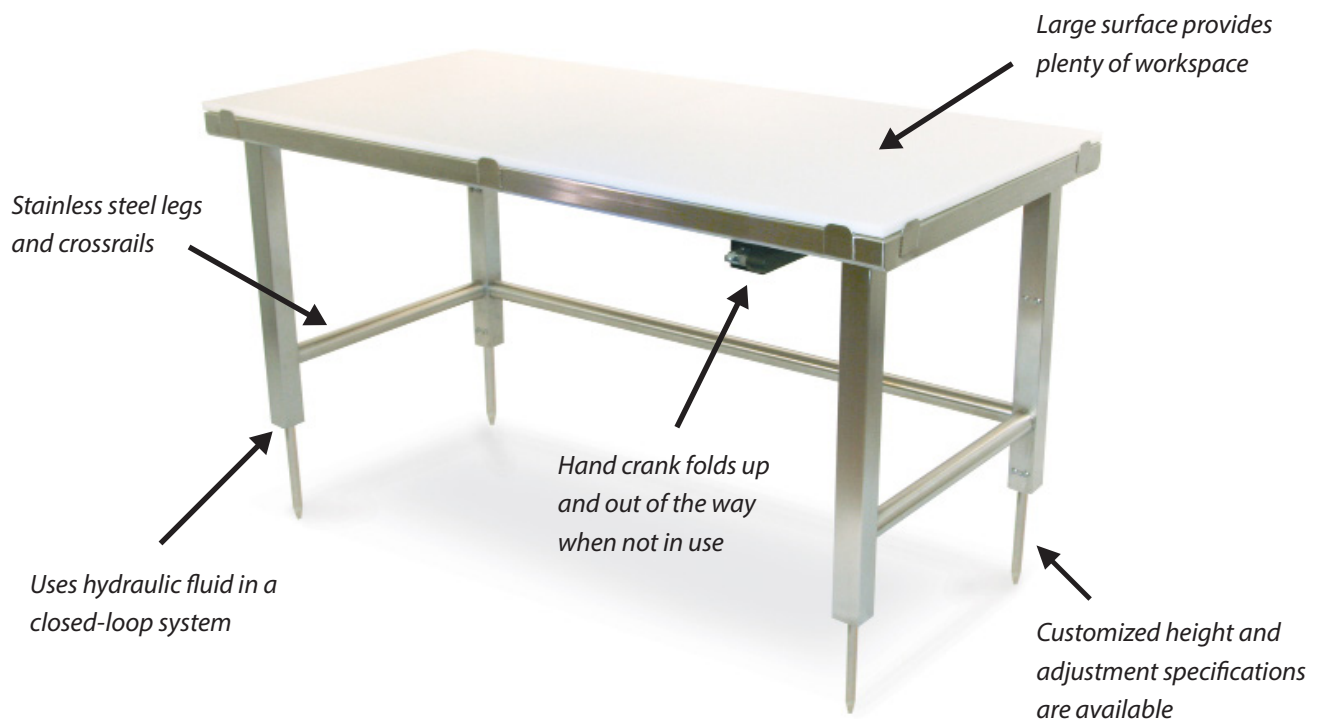
ADJUSTABLE ERGONOMIC TABLE

A reliable multi-use surface that raises
or lowers for workers of all sizes

spgusa.com



ADJUSTABLE ERGONOMIC TABLE



Reduces Absenteeism, Turnover, Injuries & Compensation Claims

For all kinds of businesses, the introduction of ergonomics has proven to generate profound and positive benefits to safety, productivity and profitability. SPG brings all of those same advantages to your operation with the Universal Stainless Steel Adjustable Ergonomic Table. Designed with a fold-away hydraulic crank, the surface can be raised or lowered quickly and easily. As a result, the innovative, ergonomic design of this table offers many benefits to both employers and employees.

- Provides a customized fit for each employee, rather than a one-size-fits-all solution ill-adapted to both the employees and the tasks at hand
- Puts less stress on employees' musculoskeletal, nervous and neurovascular systems
- Reduces injury and fatigue that lead to missed days, extended recovery times and employee turnover due to job-related injury and stress
- Cuts the number and dollar value of Worker's Compensation claims

ADJUSTABLE ERGONOMIC TABLE

A New Level of Performance

The Universal Stainless Steel Adjustable Ergonomic Table isn't just about avoiding costs, it's also about improving efficiency and profitability by:

- Increasing staff productivity with equipment designed to maximize speed and performance
- Reducing service time and improving customer satisfaction while earning employee loyalty
- Allowing you to customize your work environment with a choice of lengths and widths — as well as casters, undershelves, drawers and just about any option you'd find on a traditional table

Consider the advantages this table provides — and that the sooner you put it to work, the faster your employees will feel the ergonomic benefits ... and the quicker you'll begin to enjoy the economic advantages.

The Economics Of Ergonomics

Risk management is key for a safe operation. Businesses already have to cope with economic, operational and staffing difficulties from work-related injuries. These statistics from OSHA and health publications show you are not alone:

- Each year, 1.8 million U.S. workers report work-related ergonomic disorders — 600,000 of which require taking time off for recovery
- Ergonomic disorders account for more than one third of all lost-work injuries and illnesses
- Total direct costs for occupational ergonomic disorders are estimated at \$50 billion

What's more, these figures are expected to rise dramatically due to the aging workforce and escalating healthcare costs. The use of ergonomically designed equipment will go a long way to protect the health of your workers — and the bottom line of your business.

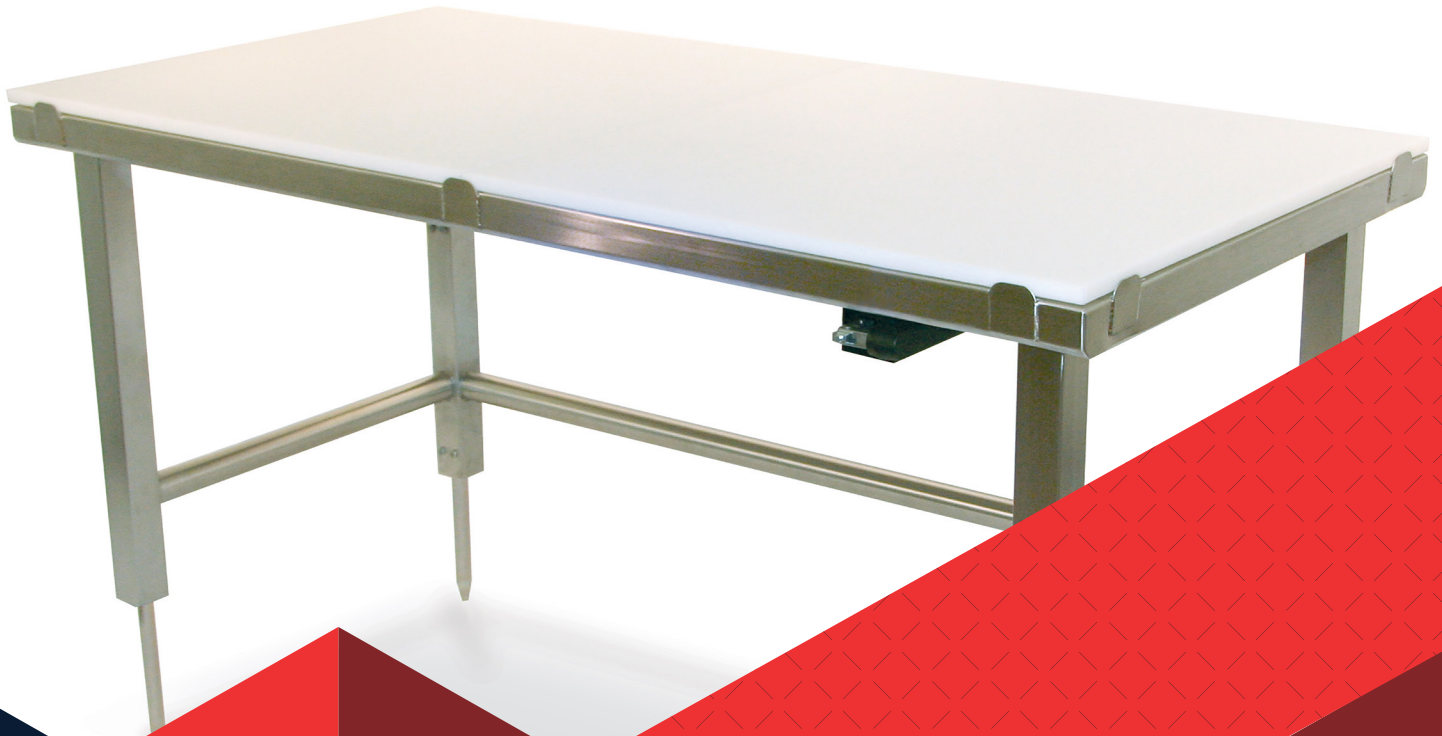
Tables with 12-Inch Adjustment Range (28" - 40")

PART NUMBER	L x W	WORKING SURFACE
48SLCA12-30	48" x 30"	301 Stainless Steel Tops/Pans
48MCTA12-30	48" x 30"	Poly Top & Tabs Added
60SLCA12-30	60" x 30"	301 Stainless Steel Tops/Pans
60MCTA12-30	60" x 30"	Poly Top & Tabs Added
72SLCA12-30	72" x 30"	301 Stainless Steel Tops/Pans
72MCTA12-30	72" x 30"	Poly Top & Tabs Added

Tables with 6-Inch Adjustment Range (34" - 40")

PART NUMBER	L x W	WORKING SURFACE
48SLCA6-30	48" x 30"	301 Stainless Steel Tops/Pans
48MCTA6-30	48" x 30"	Poly Top & Tabs Added
60SLCA6-30	60" x 30"	301 Stainless Steel Tops/Pans
60MCTA6-30	60" x 30"	Poly Top & Tabs Added
72SLCA6-30	72" x 30"	301 Stainless Steel Tops/Pans
72MCTA6-30	72" x 30"	Poly Top & Tabs Added

All models above feature bullet feet, and can be ordered with casters by adding the suffix "C" to the part number. When using casters, limiting adjustment range to 6" is recommended for stability.



CONTACT SPG

For SPG's complete product menu,
visit spgusa.com or contact us:



877.503.4SPG (4774)



info@spgusa.com



SPG International, LLC
World Headquarters
3340 Peachtree Rd Suite 1250
Atlanta, Georgia 30326

ITEM # _____

MODEL # _____

QTY: _____

PROJECT: _____

OPTIONS: YES _____

NO _____